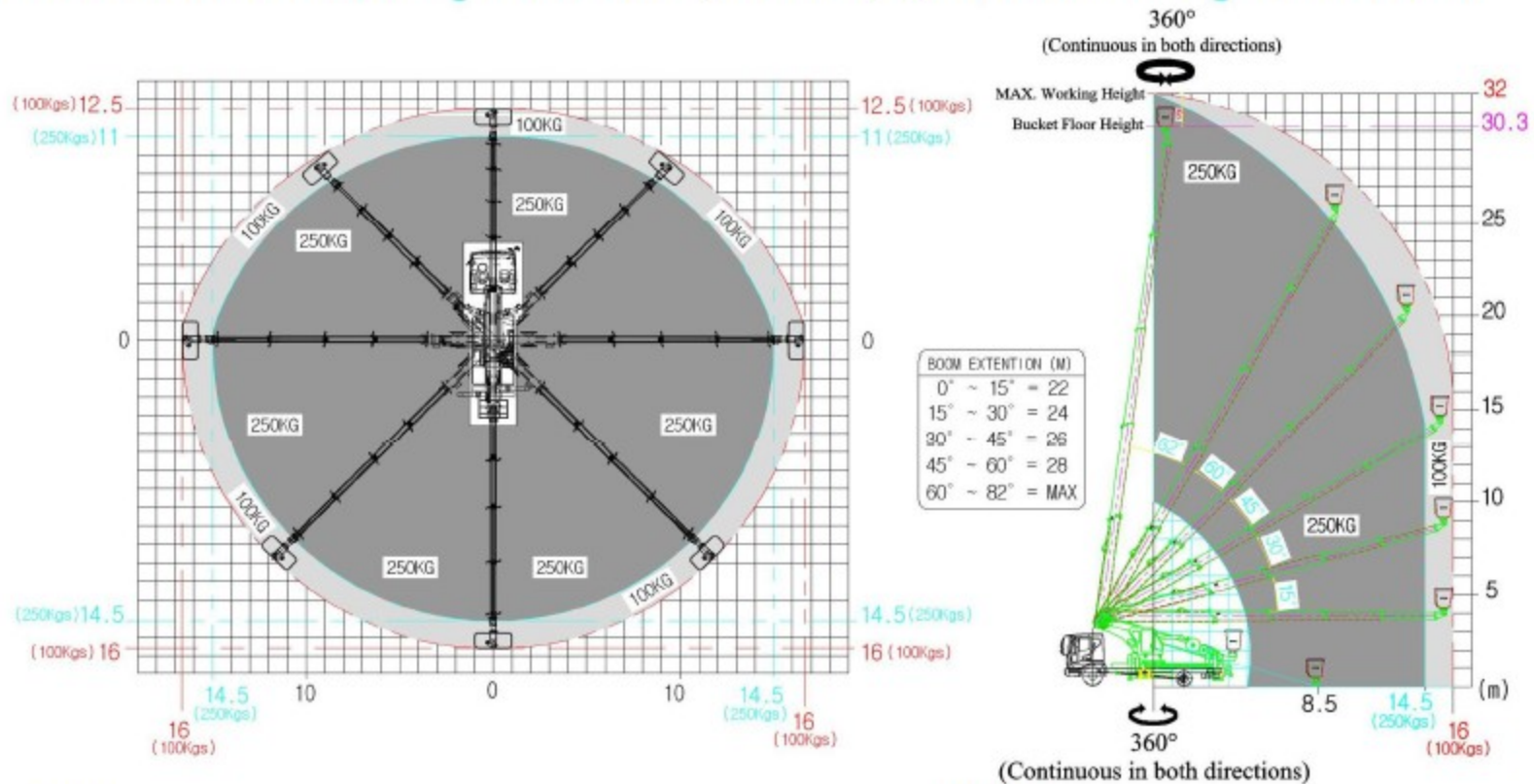


WORK AREA DIAGRAM: For Reference Only. Should stop operations and retract once the alarm sounds.



CAUTION:

Boom Cut-Off System or Work Area Limiter system works only by Wireless Remote Control in entire above work area.
Cabin Operator must be carefull while operating from Cabin Control levers since Work Area limiter will not work.
So be alert for Alarm Warning indicated by beep and red light on LCD Monitor and immediately retract the Boom back.

WARNING:

Ensure Caution to Cordon-off the entire above work area before performing Electricity related and other Works.

This Machinery must not be used for Working with Live Electricity Lines.